

New Distribution Line 35-5 – Kismet Substation



Lee County Electric Cooperative upgrades facilities in order to deliver reliable, cost-competitive electricity to our customers.

[Presenting one of the four new distribution lines originating from \(35\) Kismet Substation](#)

We are excited to announce a major upgrade to our local electrical system in NW Cape Coral. This initiative is part of our ongoing commitment to providing superior service and meeting the evolving needs of our members. The project includes building new distribution feeder routes for electricity from the Kismet substation. These improvements are designed to provide dependable power throughout the community, supporting future growth in the area.

The distribution line, 35-5, is approximately 2.07 miles long, and will be rebuilt to a single/double circuit 3-phase 336 ACSR (Aluminum Conductor Steel Reinforced). This advanced configuration will enhance the capacity and durability of our electrical infrastructure. While the four distribution lines are in total 5.09 miles of rebuilt lines, the upgrades will also help minimize outages and improve response times during severe weather events.

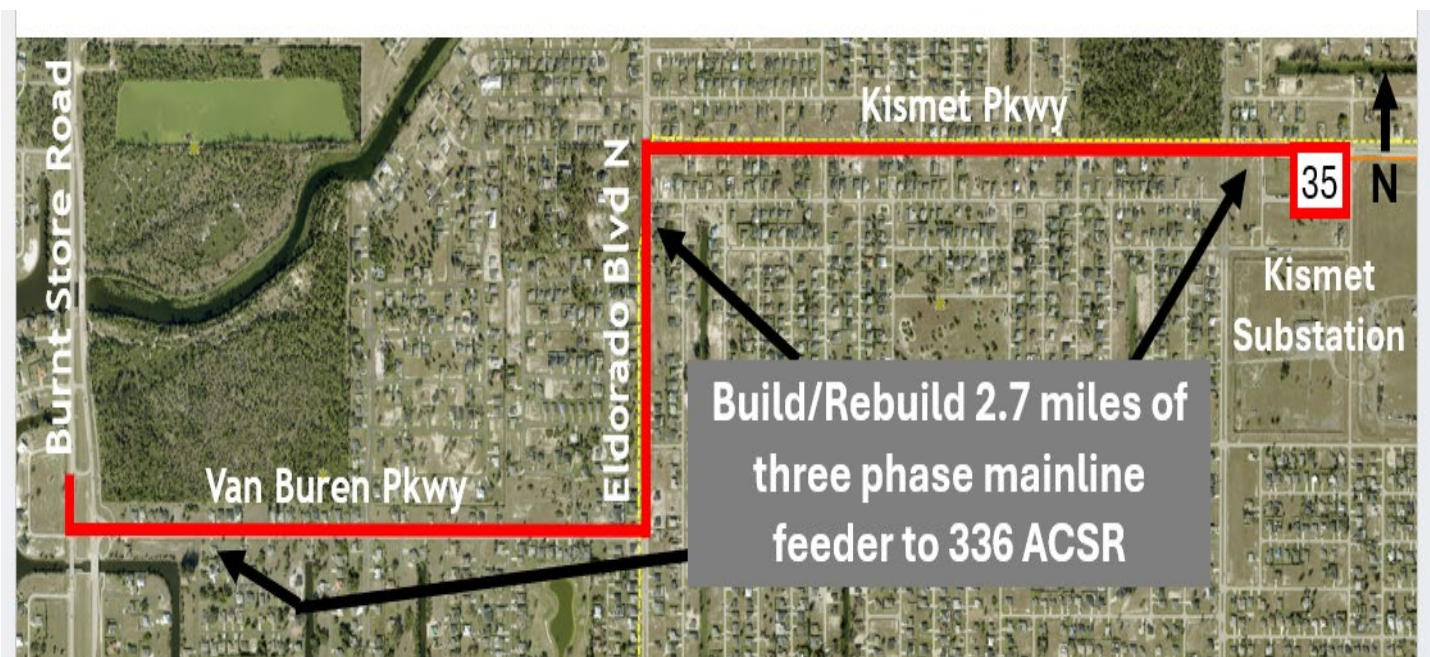
This project will deliver safe and reliable electricity to the area and lay a solid foundation for future community growth. By adding new connection points and updating our system, we are making sure our area will have long-lasting, flexible, and resilient power for years to come. We appreciate your support and patience as we work to bring these important improvements to NW Cape Coral.

[Project Timelines](#)

Construction started in 2025 and is being carefully managed by LCEC's Construction and Maintenance department to minimize any impact on members. LCEC is committed to maintaining safe operations and keeping the community informed, with an anticipated finish date in 2026.

[Project Impact](#)

- Supports local and regional power needs.
- Improves long-term reliability for members.



Expected in service 2026

For project updates contact:
OBS@LCEC.net