

New Distribution Line 34-8 – Alabama Substation



Lee County Electric Cooperative upgrades facilities in order to deliver reliable, cost-competitive electricity to our customers.

[Presenting one of the four new distribution lines originating from \(34\) Alabama Substation](#)

We are excited to announce a major upgrade to our local electrical system in SW Lehigh Acres. This initiative is part of our ongoing commitment to delivering exceptional service and meeting the evolving needs of our community. The project includes building additional distribution routes for electricity from the Alabama substation, specifically designed to provide dependable power throughout the area—including the new elementary and middle schools—and to support future growth.

The distribution line, 34-8, will be approximately 1.25 miles long and will be a robust new three-phase UD1000 (underground), with protection devices installed at critical points along the line. In total, the four new distribution lines represent about 5.3 miles of new or rebuilt infrastructure. These upgrades will improve system resilience, flexibility, and capacity ensuring reliable power delivery.

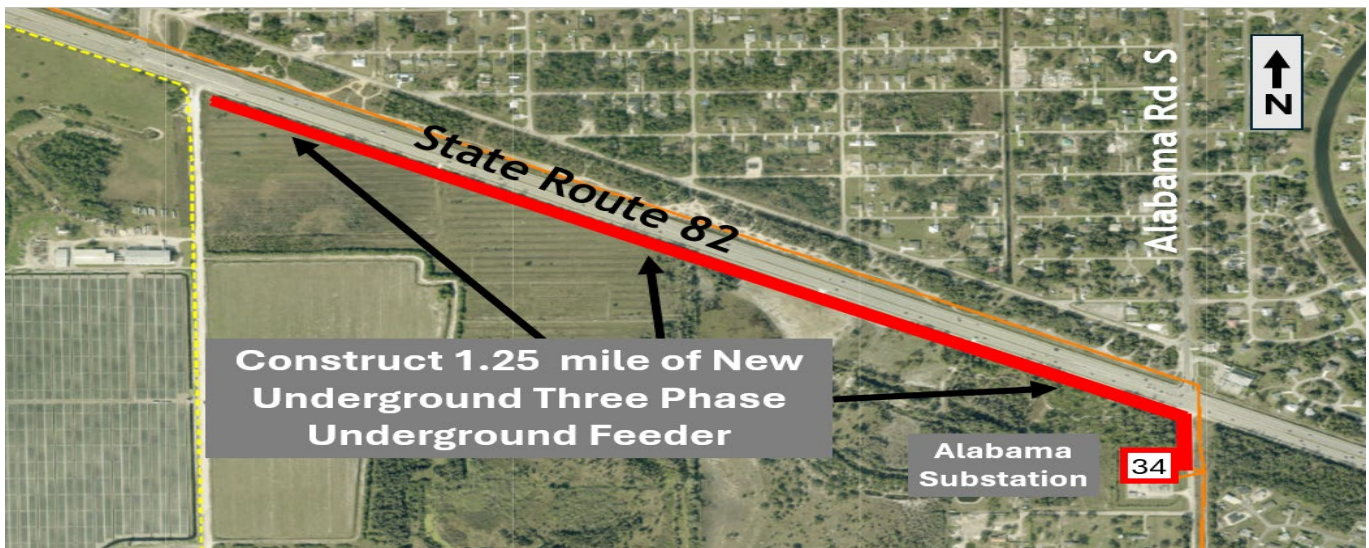
This project will provide safe and reliable electricity for SW Lehigh Acres and lay a solid foundation for continued growth and prosperity. By adding new connection points and modernizing our system, we are ensuring that our area will benefit from long-lasting, flexible, and resilient power for years to come. We appreciate your support and patience as we work to bring these important enhancements to SW Lehigh Acres.

[Project Timelines](#)

Construction started in 2025 and is being carefully managed by LCEC's Construction and Maintenance department to minimize any impact on members. LCEC is committed to maintaining safe operations and keeping the community informed, with an anticipated finish date in 2026.

[Project Impact](#)

- Supports local and regional power needs.
- Improves long-term reliability for members.



Expected in service 2026

For project updates contact:
OBS@LCEC.net