

Sustainability efforts supporting the environment

Sustainability is defined as an avoidance of the depletion of natural resources, which aligns with the LCEC cooperative business model and strategy. Throughout 2023, LCEC continued to communicate energy efficiency messaging and offer power-saving tips to members. Conservation is crucial in helping preserve natural resources to ensure they are available for the future. LCEC offers a reduced rate for electric usage below 1,000 kWh or 500 kWh. LCEC also continues to offer a net metering program, which allows customers to utilize renewable energy technology and receive a credit for produced energy above what they use themselves.

Through Environmental Funding Awards, LCEC has contributed more than \$265,000 toward programs and agencies aimed at protecting the environment and providing preservation information. Stewardship practiced internally results in several tons of recycled aluminum, copper, metal, cardboard, and other materials annually.

LCEC has a well-rounded focus on sustainability with an emphasis on people, power, and possibilities. Providing long-term stakeholder value in multiple areas is important while also remaining true to the mission of providing reliable electricity and quality service at competitive rates. LCEC is a part of the solution for a sustainable future.



Holiday Hours...



LCEC wishes you and yours a happy holiday. As always, LCEC works to deliver reliable electricity around the clock, every day of the year. Offices will be closed on the following days. Please feel free to utilize our online and mobile self-service options during these times.

CHRISTMAS:

Monday, December 25 and
Tuesday, December 26

NEW YEAR'S:

Monday, January 1, 2024

Conduct business through SmartHub anytime...holidays included!

LCEC is a nonprofit corporation. Established in 1940, LCEC delivers power to more than 244,475 customers. LCEC News is published monthly for customers by the Public Relations Department, P.O. Box 3455, N. Ft. Myers, FL 33918-3455 • 800-599-2356 or 239-656-2300 • www.lcec.net



Resolution Run 5k For United Way

Join the fun at the 12th Annual LCEC 5K Run to benefit the United Way on Saturday, January 6, 2023. The 5K Resolution Run/Walk and Kids Fun Run will be held at Jaycee Park in Cape Coral. Set up begins at 6:30 a.m. and the race starts at 7:30 a.m. The Kids Fun Run will follow the 5K. Advance registration is \$30 for ages 12 and over (\$35 day of), and \$15 (\$20 day of) for the Kids Fun Run (age 12 and under). Sign up today by going to:

www.runsignup.com/resolution24 or email 5k@lcec.net for more information.

Holiday Happenings

LCEC employee elves have been hard at work this holiday season!

Holidays Without Hunger:

30 LCEC employees, family and friends took part in the Holidays Without Hunger. This year's goal was to pack more than 1,000,000 meals in just two hours! This popular, local event benefits Meals of Hope which focuses on working together to end hunger.

Festival of Trees:

Team LCEC created a whimsical "Fairy Merry Christmas" tree for the Festival of Trees event. The 17th Annual Festival of Trees included trees from many local businesses which were raffled to raise funds for the Goodwill Industries Southwest Florida and Sidney Berne and Davis Art Center.

LCEC NEWS



DECEMBER 2023



LCEC AWARDED LARGE BUSINESS OF THE YEAR AWARD

LCEC was awarded Large Business of the Year at the 2023 Industry Appreciation Awards!

LCEC could not be more proud of its employees for the work they have done to serve LCEC members, our local community, and the rich cooperative traditions.

This award is the ultimate display of the LCEC value of working together to make success happen. LCEC was created to deliver power to cooperative members. The principle on which we were founded – service to our local community – is just as strong today as the day we opened our doors in 1940.

The Industry Appreciation Awards celebrates Lee County businesses that drive the local economy, employ our workforce, and shape their industries. It is cohosted by the Horizon Council, Lee County Economic Development Southwest Florida, and the Horizon Foundation.

LCEC to rebalance electric rates in 2024

Beginning January 1, 2024 LCEC will rebalance electric rates to account for rising wholesale power and transmission costs, material and labor cost, and continued investment in critical electric system infrastructure to sustain growth

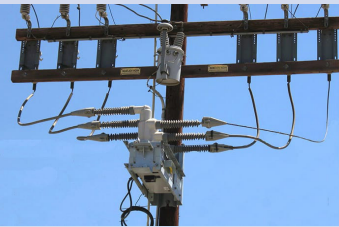
and reliability. A recent LCEC Rate Design Study revealed an imbalance between fixed and variable charges in many rate classes. The realignment of rates creates a fairer rate balance for all ratepayers.

A realignment of rates is needed and increases in the customer charge and energy charge for some rate classes while the block rate

Reliability Projects Here, There, and Everywhere...

Reliability is at the forefront of the LCEC strategy and mission. Projects to maintain, harden, and grow the electric infrastructure are planned years in advance to ensure LCEC delivers on its promise to provide reliable electricity. Below are just a few of the projects happening here, there, and everywhere throughout the LCEC service territory!

- The Kismet Substation construction is progressing and scheduled to be energized by the beginning of 2024! The project includes new transmission lines and feeders for the substation.
- The Corbett substation to Kismet substation transmission line construction began the week of September 18.
- Installation of 66 programmable "smart switches" to provide real-time data for power restoration and intelligent operations of the distribution system.



structure will remain with lower price signals for low energy usage. With the shift in cost to the base rates, the power cost adjustment will be set at zero and will offset the impact of the increase. The average residential customer using 1,000 kilowatt hours per month can expect to see their bill increase by only 75 cents (excluding government franchise fees and taxes).

Holiday Tree Safety

Only use lights, electric decorations, and extension cords that are UL-listed.

Always turn off all holiday lights and decorations while away from the house or before you go to bed.

Pay attention to safety instructions to avoid overheating or a fire.

Inspect all holiday lighting and décor for signs of damage.

Water holiday trees daily, and position at least three feet away from candles, fireplaces, space heaters, and heat vents.

Do not overload extension cords.

It's the most wonderful time of the year! It is essential to keep the following safety tips in mind:

Happy holidays to you and yours from LCEC!

SmartHub has a new look

SmartHub has a fresh, new look! Check out the refresh when you log in to your SmartHub account on the web. The same convenient features are still available with just a click!

To create a more simple user experience, some features have moved.

- Menu bar items are now located on the left-hand side of the screen. This includes drop down menus for Bill & Pay, Usage, Contact, and Settings. Below the drop downs, users can easily make a payment, view notifications, and sign out.

Quick access links are also available for the LCEC website, the credit/debit card payment portal, and the outage map portal.

Happy clicking!

Go LED for an energy efficient holiday

When trimming the home and tree this holiday season, consider using light-emitting diode (LED) lights. LED lights are bright, last 10 times longer than traditional holiday lights, use approximately 80 percent less energy, and stay cool to the touch.

Other ways to be energy efficient with LED lights is to utilize automatic timers and power strips. Automatic or programmable timers and smart power strips let you manage your holiday displays which means no more forgetting to switch off the lights at bedtime.

To be truly energy efficient this holiday season, opt for shiny ornaments, tinsel and mirrors which can create the appearance of lighting or magnify lighting without upping your energy usage.

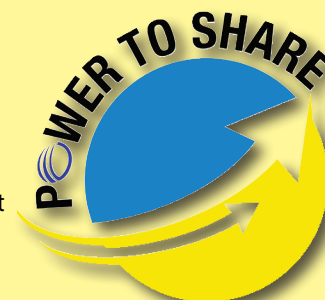
LCEC Power to Share program

A donation to the LCEC Power to Share Program makes a difference.

As the cost of living continues to rise, there is help available for those in need. LCEC and the United Way partner to create a program to assist financially strained customers having difficulty making electric payments. The program allows participating members to round up their monthly electric bill to the nearest dollar. Customers and employees also have the option to make an additional monthly contribution or make a one-time donation.

Members can enroll and unenroll easily through the LCEC [SmartHub](#), online at [lcec.net](#) or over the phone by calling LCEC Customer Care at 239-656-2300.

For more information visit [lcec.net](#).



An LCEC Community Partnership



If you receive an LCEC customer survey, return it for a chance to win \$100. Last month's winners were:

IA Tripp - Bokeelia
Eric Johnson - Cape Coral
Christine Cushen - Cape Coral

Follow us!

@lcecsfwf



Subscribe to the LCEC YouTube Channel!

Visit www.youtube.com/c/LeeCountyElectricCooperativeLCECswfl/featured

Appreciate LCEC utility workers? Want to show support? Follow LCEC on Facebook, Twitter, Instagram, and LinkedIn for behind the scenes action, latest updates, and energy tips

POWERING your EVERYDAY!

Energizing our communities is part of what makes our cooperative special!



Proud member of TOUCHSTONE ENERGY COOPERATIVE!

LCEC is dedicated to providing reliable, cost-competitive electricity with an exceptional member engagement experience. To enhance that experience, LCEC has partnered with Touchstone Energy Cooperative! Touchstone is a national network of electric cooperatives that provides research, targeted programs, communication resources, and employee development. Touchstone has served the cooperative community for more than 25 years, supporting nearly 700 electric cooperatives across 45 states. As an LCEC member, these features also benefit you!



Touchstone Energy®
Cooperatives