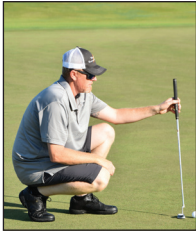


LCEC tournament benefits the local United Way

The Annual LCEC Golf Tournament, held at the Plantation Golf & Country Club, raised approximately \$35,000 for the United Way of Lee, Hendry, and Glades counties! This fun-filled event brought in 104 golfers which made up 26 teams.

LCEC is extremely thankful to all tournament participants, sponsors, and volunteers who helped support the United Way mission and those in our communities who need assistance now more than ever!



LCEC provides three Environmental Funding Awards

LCEC was honored to provide Cape Coral Friends of the Wildlife, Future Forestry, and the Beekeepers Association of SWFL with Environmental Funding Awards in September. These organizations each play a vital role in protecting our local environment.

The LCEC Environmental Funding Award program began in 2013 and has contributed more than **\$265,000** to support local organizations in their heartfelt missions. Environmental Funding is awarded twice a year with deadlines in March and September.

To apply for an environmental funding award, organizations should visit www.lcec.net/about-lcec/community-and-education/environment to download the application.



HOLIDAY HOURS

LCEC wishes you and yours a happy holiday. As always, we work to deliver reliable electricity around the clock, every day of the year. Our offices will be closed on the following days. Please feel free to utilize our online and mobile self-service options during these times.

THANKSGIVING:

Thursday, November 23 and
Friday, November 24

Christmas:

Monday, December 25 and
Tuesday, December 26

New Year's:

Monday, January 1, 2024

Conduct business through SmartHub anytime...holidays included!

If you receive an LCEC customer survey, return it for a chance to win \$100. Last month's winners were:
Dennis Wash - Lehigh Acres
Jason Hornstein - Cape Coral
Gary Stephens - North Fort Myers

LCEC is a nonprofit corporation. Established in 1940, LCEC delivers power to more than 243,669 customers. LCEC News is published monthly for customers by the Public Relations Department, P.O. Box 3455, N. Ft. Myers, FL 33918-3455 • 800-599-2356 or 239-656-2300 • www.lcec.net

RATE CHANGE SCHEDULED FOR 2024

As we all experiencing higher costs for food, shelter, clothing, and just about everything, LCEC is also facing significant challenges related to inflation and supply chain barriers. In addition, increased power costs from the LCEC wholesale power supplier continue to have an impact on electric rates.

LCEC works year-round to keep costs down while the expenses related to maintaining a reliable electric grid continue to increase. In October, the Board of Trustees considered an increase in the rate charged for distributing electricity. As of this printing, the new rates, effective January 2024 were not finalized and will be communicated as soon as details are available.

There are many factors that contribute to the overall energy bill. The largest piece, which accounts for nearly 75 percent of the bill, goes towards purchasing power. The other 25 percent is the part of the bill that LCEC can manage and covers other costs such as distribution operations and maintenance of the power grid, interest, taxes, depreciation of assets, and administrative costs associated with running a business.



MUTUAL AID

Hurricane Idalia made landfall on August 30, 2023 bringing flood waters and leaving destruction in its wake. LCEC Crews prepared and were ready to respond when they received the same call for help that LCEC made to neighboring utilities due to Hurricane Ian.

A total of 14 LCEC employees set out to assist Tri-County Electric Cooperative Inc. and Suwannee Valley Electric Cooperative in North Florida where members received the worst effects of Hurricane Idalia. This is just one example of the many benefits of being a part of the cooperative network of electric utilities.



The relationship between ELECTRIC RATES AND RELIABILITY

Electric rates are determined with reliability in mind. Rate levels are set through extensive forecasting. LCEC looks closely at expected revenue and compares it to the budgeted expenses for operations, power supply, and capital investment in the electric infrastructure. All of these components play a vital role in delivering reliable electricity. A portion of funds collected from electric bills are directed toward hardening and maintaining the LCEC infrastructure to ensure reliability. The LCEC mission continues to center around providing reliable and competitive electric services and quality customer experience.



Plug into holiday safety

Did you know more than one hundred fires happen per year due to issues with decorative and holiday lights? Here are some tips to stay safe:

Inspect electrical decorations for damage before use.
Cracked or damaged sockets, bare wires, and loose connections may cause a serious shock or start a fire.

Do not overload electrical outlets.
Overloaded electrical outlets are a common cause of holiday fires. Only plug one high-wattage cord into each outlet at a time.

Never connect more than three strings of incandescent lights.
More could potentially blow a fuse, or worse, cause a fire.

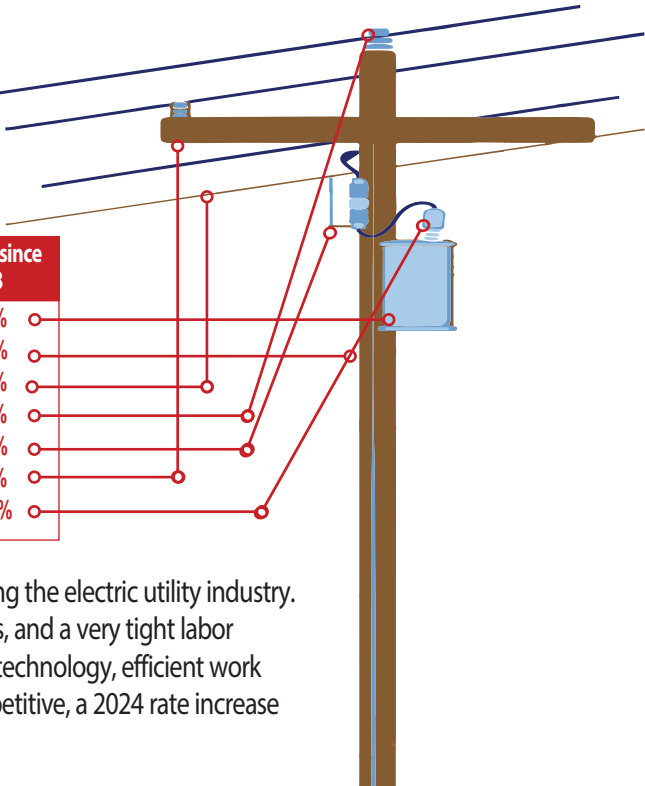
Protect cords from damage.
To avoid shock or fire hazards, be sure to never pinch cords, hide them under furniture, place them near a heat source, or secure them with nails or staples.

Unplug when not in use.
Never leave holiday lights on when not home or while sleeping. It is estimated that half of all home fires happen between 11 p.m. and 7 a.m.

Material Costs 2018 vs. 2023

Description		Purchase Price (2018)	Purchase Price (2022-2023)	Increase since 2018
TRANSFORMER	EACH	\$1,163.00	\$2,412.52	107%
WOOD POLE	EACH	\$ 193.03	\$ 315.12	63%
WIRE	FEET	\$ 0.34	\$ 1.03	202%
INSULATOR	EACH	\$ 13.65	\$ 38.82	184%
FUSE	EACH	\$ 77.20	\$ 129.18	67%
CROSS ARM	EACH	\$ 40.00	\$ 139.98	250%
ARRESTOR	EACH	\$ 57.90	\$ 93.15	61%

The rising cost of materials impacts nearly every business including the electric utility industry. Unprecedented supply chain disruptions, materials cost increases, and a very tight labor market have a direct impact on electric rates. While utilization of technology, efficient work practices, and process improvements help keep LCEC rates competitive, a 2024 rate increase will be needed to continue providing reliable electric service.



WANTED

LCEC BOARD OF TRUSTEE APPLICANTS

Applications for three LCEC Board positions are currently being accepted. Every LCEC member who lives in the following areas can apply in the 2024 LCEC Trustee Election:

Cape Coral • Marco Island, Goodland, and Everglades City • Sanibel, Captiva, and Pine Island

All applicants are considered and interviewed by the Nominating Committee. Qualified candidates will be included on the ballot and voting takes place in March, 2024. Board terms are staggered to provide continuity on the Board. Potential qualifications for nominated candidates include:

- Business experience
- Ability to interpret operating and financial reports
- Community leadership
- Sensitivity to member concerns, attitudes, and issues
- Integrity and minimal possibility for conflict of interest
- Availability to attend monthly Board and Committee meetings
- Capability to contribute to Board discussions and decisions


Members considering a position on the Board of Trustees can contact LCEC Public Relations at pr@lcec.net. Applications will be accepted through January 2, 2024. Visit the Board of Trustees page at lcec.net for more details on the Board and their importance to the governance of LCEC.

BEWARE of Holiday Scams

Tis the season for scammers to try to take advantage. Know what to look for to protect yourself from holiday grinchies!

LCEC will not:

- Come into your home without making an appointment ahead of time
- Solicit personal information over the phone, unless you initiated the call
- Threaten to disconnect your power if you do not take immediate action to provide personal information over the phone
- Visit your home offering cash refunds on deposits or electric charges



Meter Cheating is a Criminal Offense

LCEC utilizes automated meter reading technology, business intelligence, reporting, and field investigations to detect theft, reduce losses, and prevent injury to those who choose to steal electricity. Meter tampering is not a victimless crime. The cost is a burden on other customers in the longrun and it is extremely dangerous and life threatening. To find out more about the dangers, cost, and consequences of stealing electricity, or if you suspect someone of stealing electricity, visit lcec.net or call 239-656-2300.

Follow us!

@lccswfl



Subscribe to the LCEC YouTube Channel!
Visit www.youtube.com/c/LeeCountyElectricCooperativeLCCSWFL/featured

Appreciate LCEC utility workers? Want to show support? Follow LCEC on Facebook, Twitter, Instagram, and LinkedIn for behind the scenes action, latest updates, and energy tips