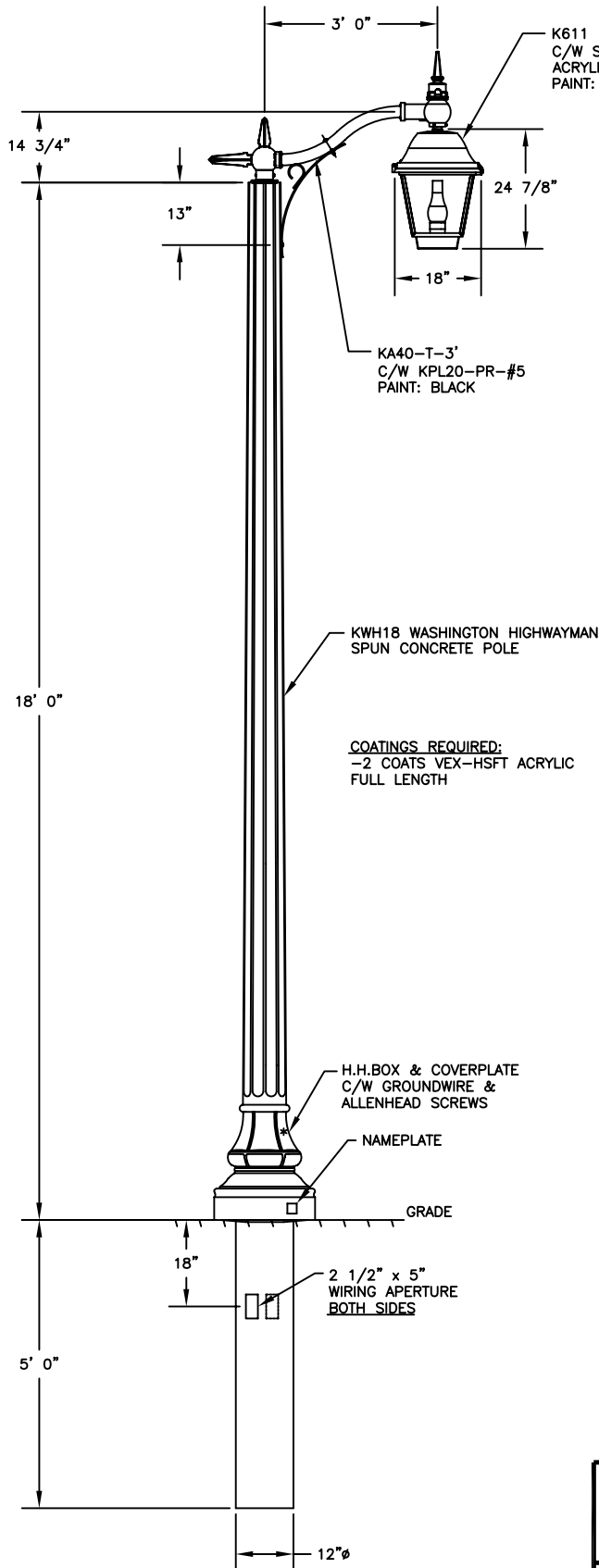


REV.	ALTERATION	DATE	BY
A	SOCKET TYPE WAS MOGUL	10/5/07	M.Y



LUMINAIRE SPECIFICATIONS

CATALOGUE NO.: K611-P-SAC-III-175(MED)
-MH-120-KPL20-#5

QUANTITY:
MOUNTING TYPE: PENDANT
OPTICAL DESIGN: SEGMENTED REFLECTOR
HORIZONTAL LAMP

LENS MATERIAL: ACRYLIC
LENS FINISH: CLEAR
IES CLASS.: TYPE III
WATTAGE: 175W
SOCKET TYPE: MEDIUM
LIGHT SOURCE: METAL HALIDE
LINE VOLTAGE: 120V
PAINT: BLACK
OPTIONS: KPL20 LEVELING DEVICE C/W
TWISTLOCK RECEPTACLE
(PHOTO-EYE BY OTHERS)
#5 FINIAL

ANSI M57 LAMP BY OTHERS

BALLAST INFORMATION:

	<u>SUPPLIED</u>	<u>ALTERNATE</u>
BALLAST TYPE:	CWA	CWA
BALLAST MANU:	UNIVERSAL	ADVANCE
CATALOG NUMBER:	M175MLTAC3M	71A5590

OPTIONS:

QUICK DISCONNECT } PLEASE SELECT ONE
 TERMINAL BLOCK }
 OTHER:

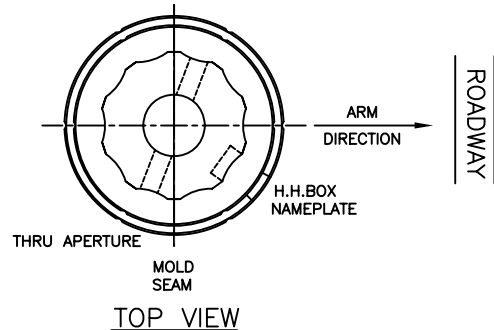
ARM SPECIFICATIONS


CATALOGUE NO.: KA40-T-1-36"
 QUANTITY:
 MATERIAL: ALUMINUM
 PAINT: BLACK

POLE SPECIFICATIONS

CATALOGUE NO.: KWH18-G-E11
 C/W 140-25/30

QUANTITY:
 SECTION: FLUTED ROUND
 COLOR: ECLIPSE
 FINISH: ETCHED
 POLE TOP: $\phi 6 \frac{3}{4}$ "
 POLE BUTT: $\phi 12$ "
 POLE LENGTH: 23' 0"
 APPROX WEIGHT: 1,658 lbs.



 KING LUMINAIRE COMPANY INC.			
840 WALKER'S LINE, P.O. BOX 7, BURLINGTON, ONTARIO, CANADA L7R 3X9		P.O. BOX 266 JEFFERSON, OHIO 1153 STATE ROUTE 46N U.S.A. 44047	
DRAWING NAME: CONCEPT DWG	DWG NUMBER 206A4335-3	DATE: 7/17/07	DWG BY: M.L.
PROJECT/CUSTOMER: LCEC			REV. A
PROJECT/CUSTOMER: LCEC			CHK BY: